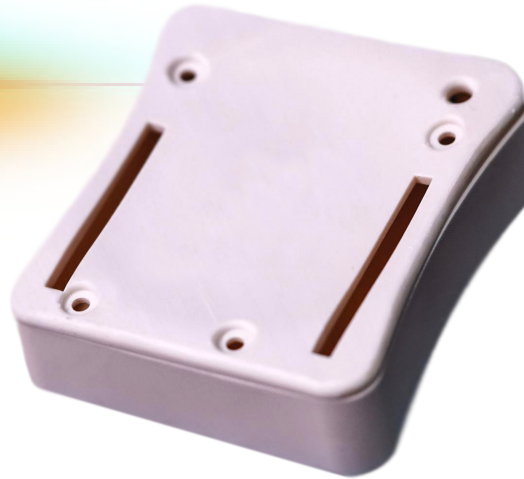


Technical Data

Photocentric **3D**
RESINS



Daylight Precision
Hard



SPECS

FEATURES

Daylight Precision Hard White resin has been created to produce highly strong, precise parts on the LC Precision Printer range along with a clean white colour. The printed parts will exhibit exceptional tensile strength and elongation comparable to that of acrylic and polyimide. The rigid parts produced show minimal shrinkage possible along with great accuracy. The resin is water and soap washable, so no need for IPA and will provide a dry surface finish after post exposure.

PROCESSING INSTRUCTIONS

Follow the procedures laid out in your 3D Liquid Crystal user manual. Polymer should be poured into the tray away from direct sunlight. Polymer can be reused but should be poured through a filter to remove solid lumps. Keep hood on at all times. Liquid polymer is soluble in water and soap. Object should be post cured under UV in water to remove any surface tack, followed by UV light at 80 °C for minimum of 1 hour to obtain the maximum tensile properties.

IDEAL APPLICATIONS

- Engineering parts
- Consumer Goods
- Thermoforming models

DATA

Viscosity (At 25°C Brookfield spindle 3)	980 cPs
Hardness ASTM D2240 (After post exposure)	94 Shore D
Tensile strength ASTM D638 (Postcured 120 mins UV and 80°C heat)	80 MPa
Elongation at break ASTM D638 (Postcured 120 mins UV and 80°C heat)	5.6%
Storage	10<t>50°C
Density	1.09 g/cm ³

AVAILABLE COLOURS

White

Available in 1kg bottles.